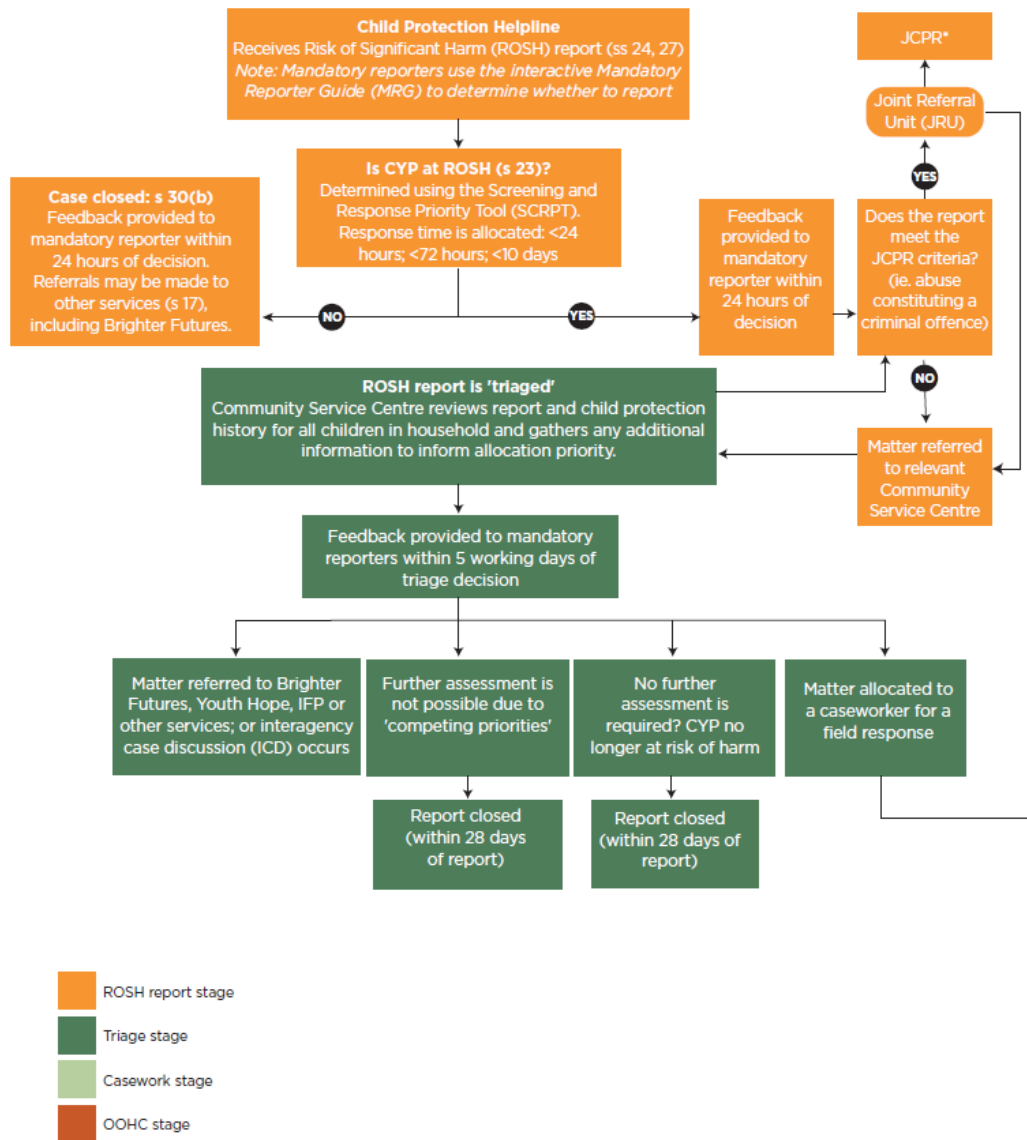
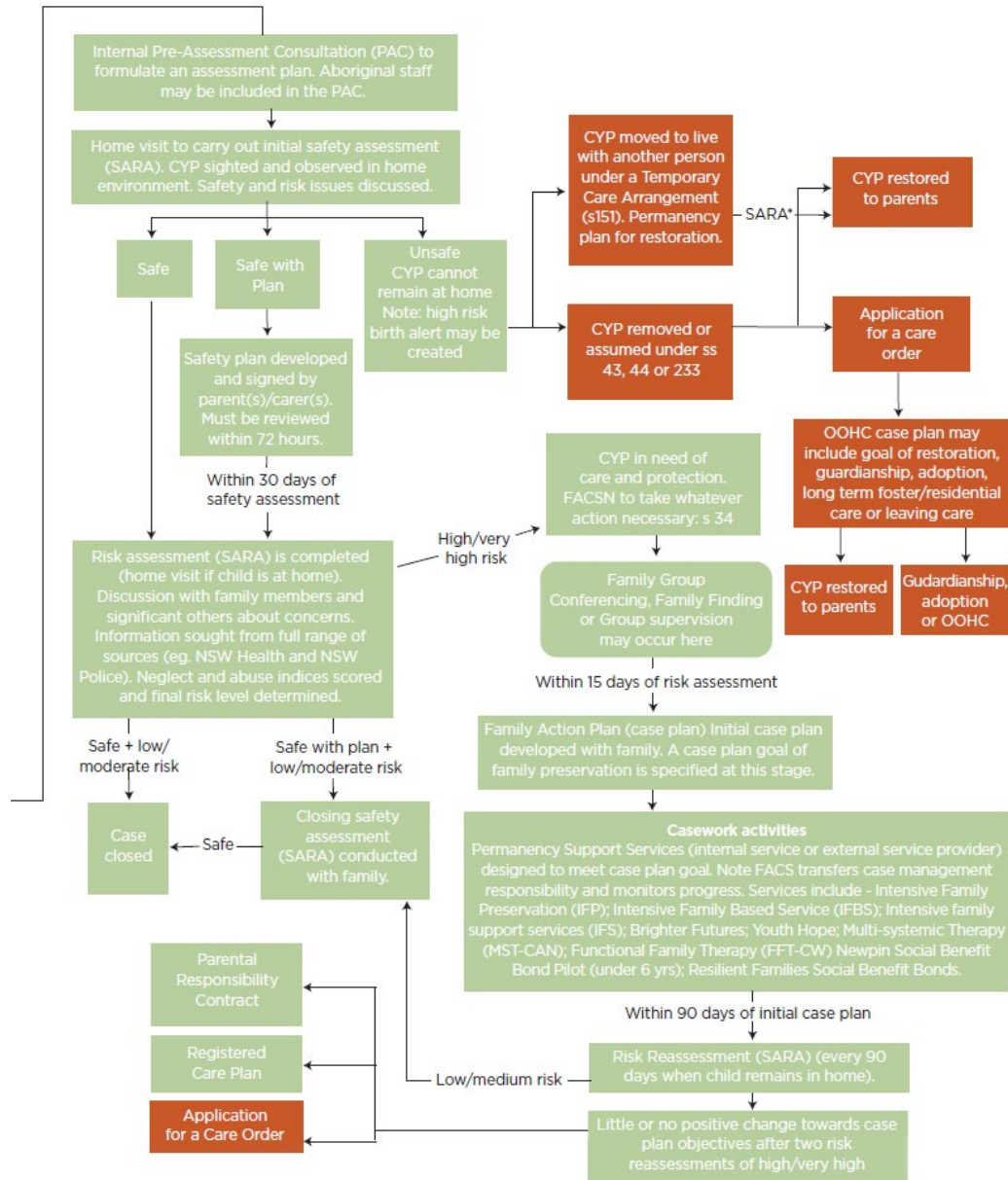


# Appendix three – Child protection flowchart from 'Family is culture' report





\* This may include one or more of the following: a risk assessment, a risk reassessment or a closing safety assessment  
 \* FACS, NSW Health and NSW Police Force

Source: Family is Culture: Independent Review into Aboriginal out of home care in New South Wales, Professor Megan Davis, Chairperson, October 2019.